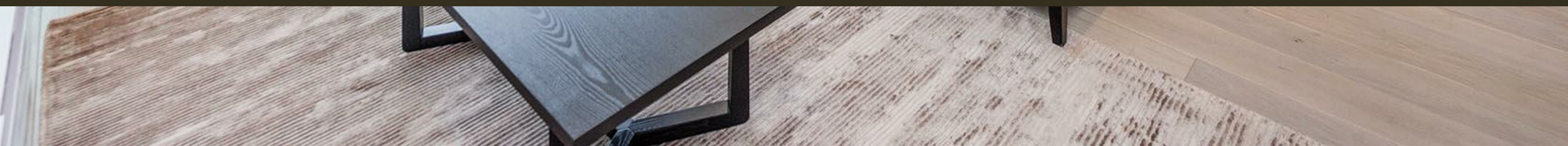




Merano Residences, 30 Albert Embankment  
London SE1

GARTONJONES.COM



# Merano Residences, 30 Albert Embankment London, SE1

GARTON JONES.COM

9 Albert  
Embankment  
London  
SE1 7SP

Lettings:  
+44 (0) 20 7735 1888  
nineelms@gartonjones.com  
www.gartonjones.com

## £1,250 Per Week

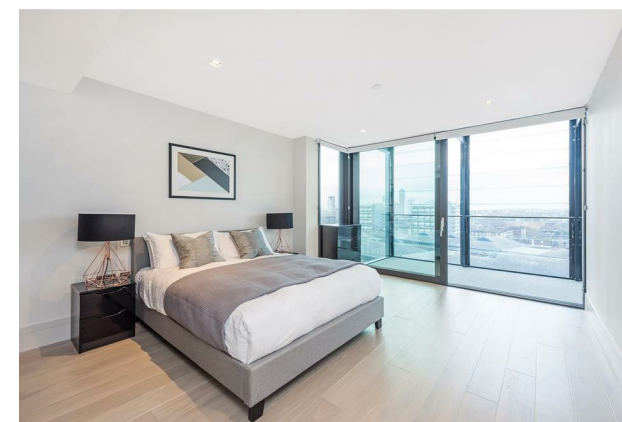
A 2-bedroom apartment of 1,484sq.ft (138sq.m) offering some of the best direct river views towards the Houses of Parliament, Big Ben, the City of London and beyond. This apartment is based in the prestigious Merano Residences, a popular riverside development created by Rogers Stirk Harbour and Partners. This spacious property comprises very generous living space throughout; a large reception room, open plan reception, integrated kitchen, balcony enjoying direct views of the River Thames with a picture-postcard aspect towards the Houses of Parliament and beyond, walk-in wardrobe to the master bedroom and two luxury bathrooms.

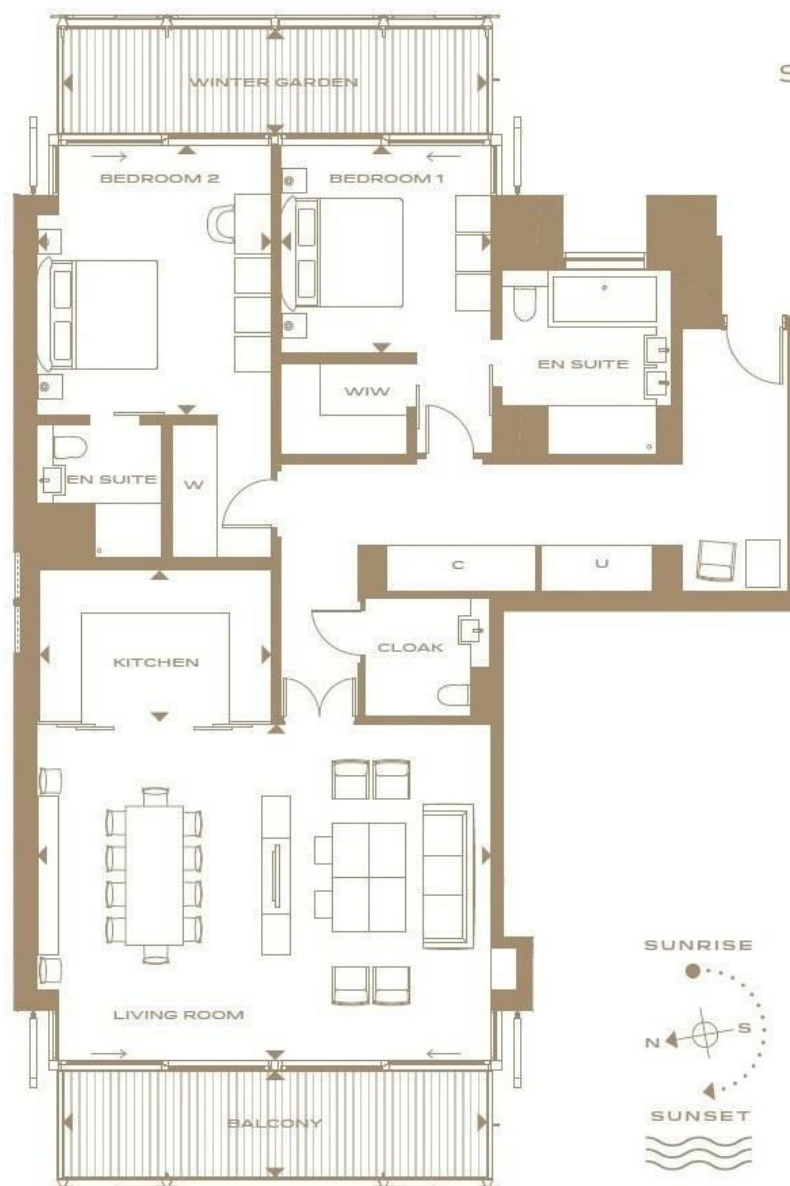
Fashionably located on the South Bank of the river and within easy reach of Westminster, Chelsea and Knightsbridge, Merano Residences also provides residents with a dedicated 24-hour concierge service, a shared external roof terrace on level 14, and you will be only 5 minutes' walk to the transport links of Vauxhall with its excellent rail, tube, and bus services. The river taxi pier at St George Wharf is also within easy reach.

Please note furniture may differ to that shown in the current photos.

Lambeth Council Tax Band H  
12 Month Minimum Term  
6 Week Security Deposit

- 2 Bedrooms
- 1,484sq.ft (138sq.m)
- 2 Bathrooms (1 En-Suite)
- Stunning River Views
- Balcony & Winter Garden
- Modern Development
- Walk-in Wardrobe
- Excellent Storage Throughout
- 24 Hour Concierge
- 0.3 Miles from Vauxhall Station





## SINGLE BAY APARTMENT TYPE 1

Living	7.50m x 5.55m / 24'7" x 18'3"
Kitchen	3.80m x 2.50m / 12'6" x 8'2"
Bedroom 1	3.50m x 3.45m / 11'6" x 11'4"
Bedroom 2	3.90m x 4.45m / 12'10" x 14'7"
Balcony	7.00m x 1.75m / 22'11" x 5'9"
Winter Garden	7.00m x 1.70m / 22'11" x 5'7"
Total internal area	138 sq m / 1,484 sq ft
Total external area	24 sq m / 265 sq ft

